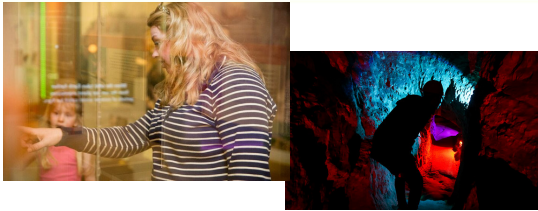


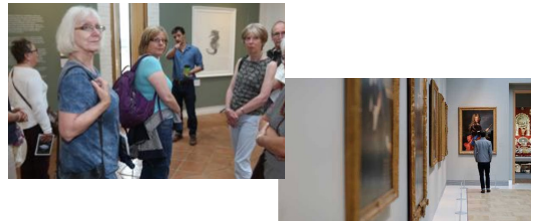
ART LOVERS' ITINERARIES

The area is an art lovers' treat. Whether you want to start your day in the fresh air and finish with a trip to the city, or get away to the country side and enjoy being able to indulge a love of both art and nature the options are there for you.



CRESWELL CRAGS

At **Creswell Crags** experience art at its earliest by touring Church Hole cave, containing examples of the oldest verified cave art in the UK, set in a beautiful limestone gorge. With its award winning visitors' centre housing exhibitions and archaeological finds this is a unique art lovers' experience.



HARLEY GALLERY

If you choose to stay in the beauty of this rural setting a 2 mile car journey brings you to the unexpected gem of the **Harley Gallery** where exhibitions from leading contemporary artists and makers are displayed and the Portland Collection is held.

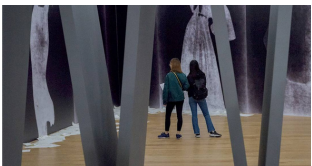
Details: The Harley Gallery, A60 Mansfield Road, Welbeck, Worksop, Nottinghamshire. S80 3LW. 2 miles travel by car between here and Creswell Crags



SHEFFIELD GALLERIES

If the pull of city is drawing you, you could drive west 17 miles to Sheffield where **the Millennium Gallery** offers both permanent and temporary exhibits and nearby **Graves gallery** displays works by Turner, Damien Hirst and Sam Taylor-Wood.

Details: **Millennium Gallery**, Arundel Gate, Sheffield. S1 2PP/**Graves Gallery**, Surrey St, Sheffield, S1 1XZ (no carparking other than city centre car parks)
17 miles travel by car between here and Creswell Crags



NOTTINGHAM CONTEMPORARY

Or perhaps head 32 miles south to Nottingham where you can spend time at **Nottingham Contemporary**, one of the UK's largest contemporary art institutions.

Details: Weekday Cross, Nottingham, NG1 2GB. Nearest car park is Lace Market.
32 miles travel by car between here and Creswell Crags